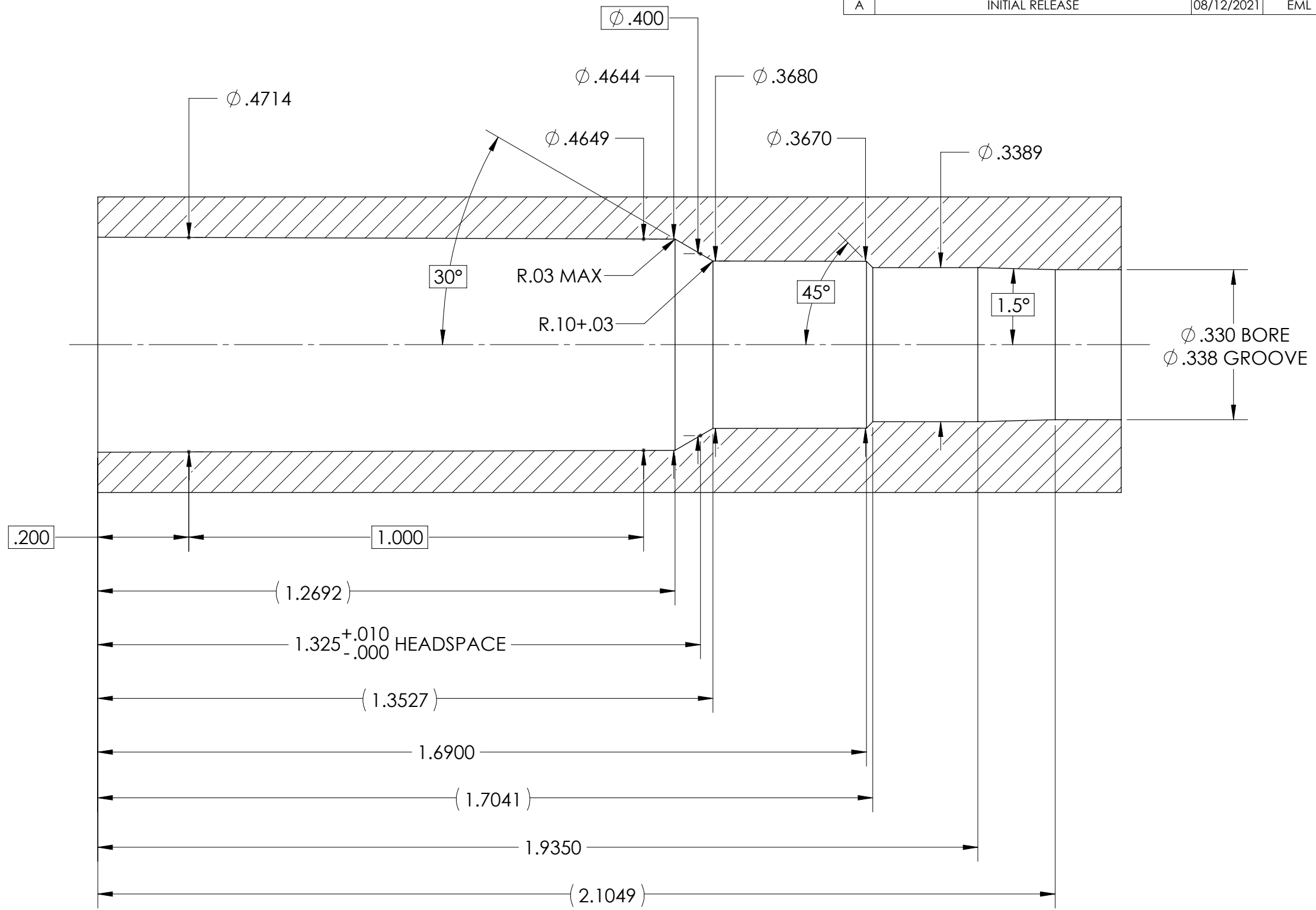
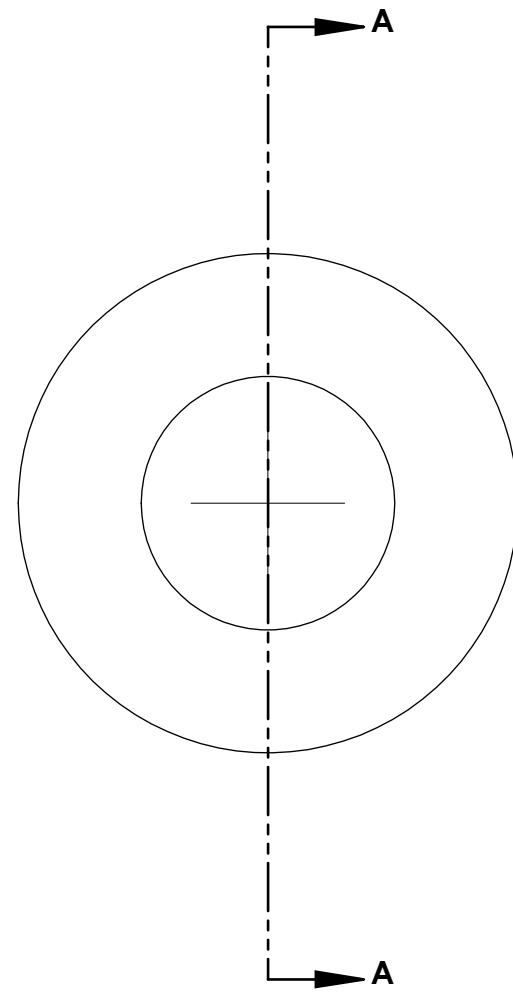


REVISIONS			
REV.	DESCRIPTION	DATE	APPROVED
A	INITIAL RELEASE	08/12/2021	EML

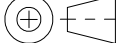


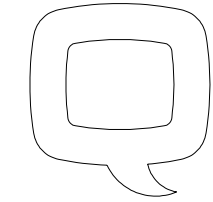
CHAMBER
 UNLESS OTHERWISE SPECIFIED
 ALL DIAMETERS +.002
 ALL LENGTHS +.015

BORE
 ALL DIAMETERS +.002
 TWIST 1:3 (RESTRICTED USE 1:1.5)
 MIN BORE AREA: .0882 SQ IN
 5 GROOVES OPTIONAL

PROPRIETARY AND CONFIDENTIAL
 THE INFORMATION CONTAINED IN THIS DRAWING IS THE SOLE PROPERTY OF Q LLC. ANY REPRODUCTION IN PART OR AS A WHOLE WITHOUT THE WRITTEN PERMISSION OF Q LLC IS PROHIBITED.

THIS DOCUMENT CONTAINS TECHNICAL DATA WITHIN THE DEFINITION OF THE INTERNATIONAL TRAFFIC IN ARMS REGULATIONS, AND ARE SUBJECT TO THE EXPORT CONTROL LAWS OF THE U.S. GOVERNMENT. TRANSFER OF THIS DATA BY ANY MEANS TO A FOREIGN PERSON, WHETHER IN THE U.S. OR ABROAD, WITHOUT AN EXPORT LICENSE OR OTHER APPROVAL FROM THE U.S. DEPARTMENT OF STATE, IS PROHIBITED.

INTERPRET DRAWING
 PER ASME Y14.5
 MIL-W-13855 APPLIES
 THIRD ANGLE
 PROJECTION 
 DIMENSIONS ARE IN INCHES
UNSPECIFIED TOLERANCES
 LINEAR: ±.005
 IMPLIED POSITION: ±.005
 ANGULAR: ±.5°



DESCRIPTION 8.6 BLK, CHAMBER		
SCALE 2:1	DRAWING NO. 2819	REVISION A