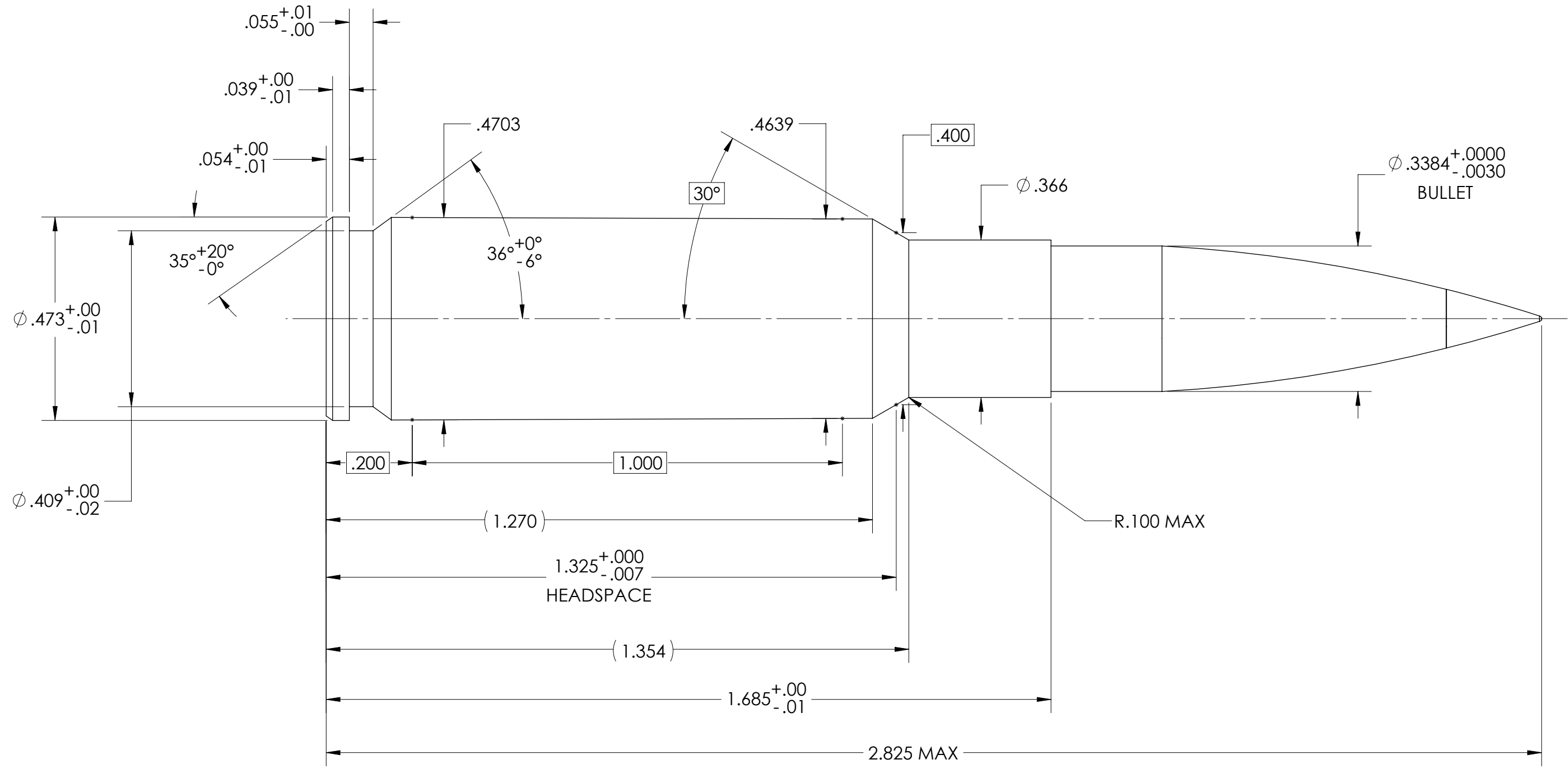


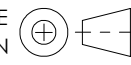
REVISIONS			
REV.	DESCRIPTION	DATE	APPROVED
A	INITIAL RELEASE	8/16/2021	EML

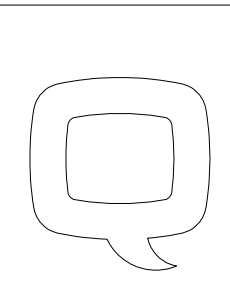


**CARTRIDGE**  
 UNLESS OTHERWISE SPECIFIED BODY DIA  $-.008$   
 CASE VOLUME  $.1885 \text{ cu-in (3.089cc)}$   
 NO POLISHING CASE AFTER ANNEAL, ANNEAL MARKS MUST BE VISIBLE

**PROPRIETARY AND CONFIDENTIAL**  
 THE INFORMATION CONTAINED IN THIS DRAWING IS THE SOLE PROPERTY OF Q LLC. ANY REPRODUCTION IN PART OR AS A WHOLE WITHOUT THE WRITTEN PERMISSION OF Q LLC IS PROHIBITED.

THIS DOCUMENT CONTAINS TECHNICAL DATA WITHIN THE DEFINITION OF THE INTERNATIONAL TRAFFIC IN ARMS REGULATIONS, AND ARE SUBJECT TO THE EXPORT CONTROL LAWS OF THE U.S. GOVERNMENT. TRANSFER OF THIS DATA BY ANY MEANS TO A FOREIGN PERSON, WHETHER IN THE U.S. OR ABROAD, WITHOUT AN EXPORT LICENSE OR OTHER APPROVAL FROM THE U.S. DEPARTMENT OF STATE, IS PROHIBITED.

INTERPRET DRAWING PER ASME Y14.5 MIL-W-13855 APPLIES  
 THIRD ANGLE PROJECTION   
 DIMENSIONS ARE IN INCHES  
**UNSPECIFIED TOLERANCES**  
 LINEAR:  $\pm .005$   
 IMPLIED POSITION:  $\pm .005$   
 ANGULAR:  $\pm .5^{\circ}$



DESCRIPTION		
8.6 BLK, CARTRIDGE		
SCALE	DRAWING NO.	REVISION
1:1	3025	A